



KHALSA PRIMARY SCHOOL

'Faith Inspired Education'

Wexham Road, Slough, Berkshire, SL2 5QR Tel: 01753 823501

Email: office@kpslough.com Web: <http://www.khalsaprimarieschool.com>

Friday 25th September 2020

Dear Parent/Carer,

Khalisa Primary School – COVID-19 Update

As you will know it is **COMPULSORY** to wear a face covering when dropping off and picking up your child. The health of our parents, staff and children is our priority.

Yesterday, the Prime Minister announced further national measures to address the rising cases of coronavirus (COVID-19) in England. These measures came into force from today. **It is vital that children continue to attend school every day.**

Guidance on COVID-19

Slough Borough Council has provided the attached guidance for parents/carers regarding COVID-19.

The main symptoms of coronavirus (COVID-19) are:

- a high temperature – 37.8 Degrees Celsius and above.
- a new, continuous cough – this means coughing a lot for more than an hour, or 3 or more coughing episodes in 24 hours (if you usually have a cough, it may be worse than usual)
- a loss or change to your sense of smell or taste – this means you've noticed you cannot smell or taste anything, or things smell or taste different to normal

Please note, as a school we are taking advice from the DFE and Public Health protection team on a regular basis. If there are any further updates we will inform you accordingly.

For more information, do not hesitate to contact the Public Health publichealthslough@slough.gov.uk

The DFE have provided a [Panjabi](#) translation of the guidance for parents and carers with children in nursery, school or college in the autumn term. If you require any other language, please contact us.

Slough Family Information Service

The Family Information Service is an integral part of the Early Help Offer at Slough Borough Council.

Children and families can benefit from the wide range of information and advice that they can provide regarding family services in Slough and for children aged 0-19 years. These services range from Early Help, Send Support, Health and Wellbeing, Family Support Services alongside Leisure/Things to do amongst others. The link for their website is www.sloughfamilyservices.org.uk and their telephone number is 01753 476589.

Overleaf, we have provided a few simple steps for you to follow if your child is not feeling well.





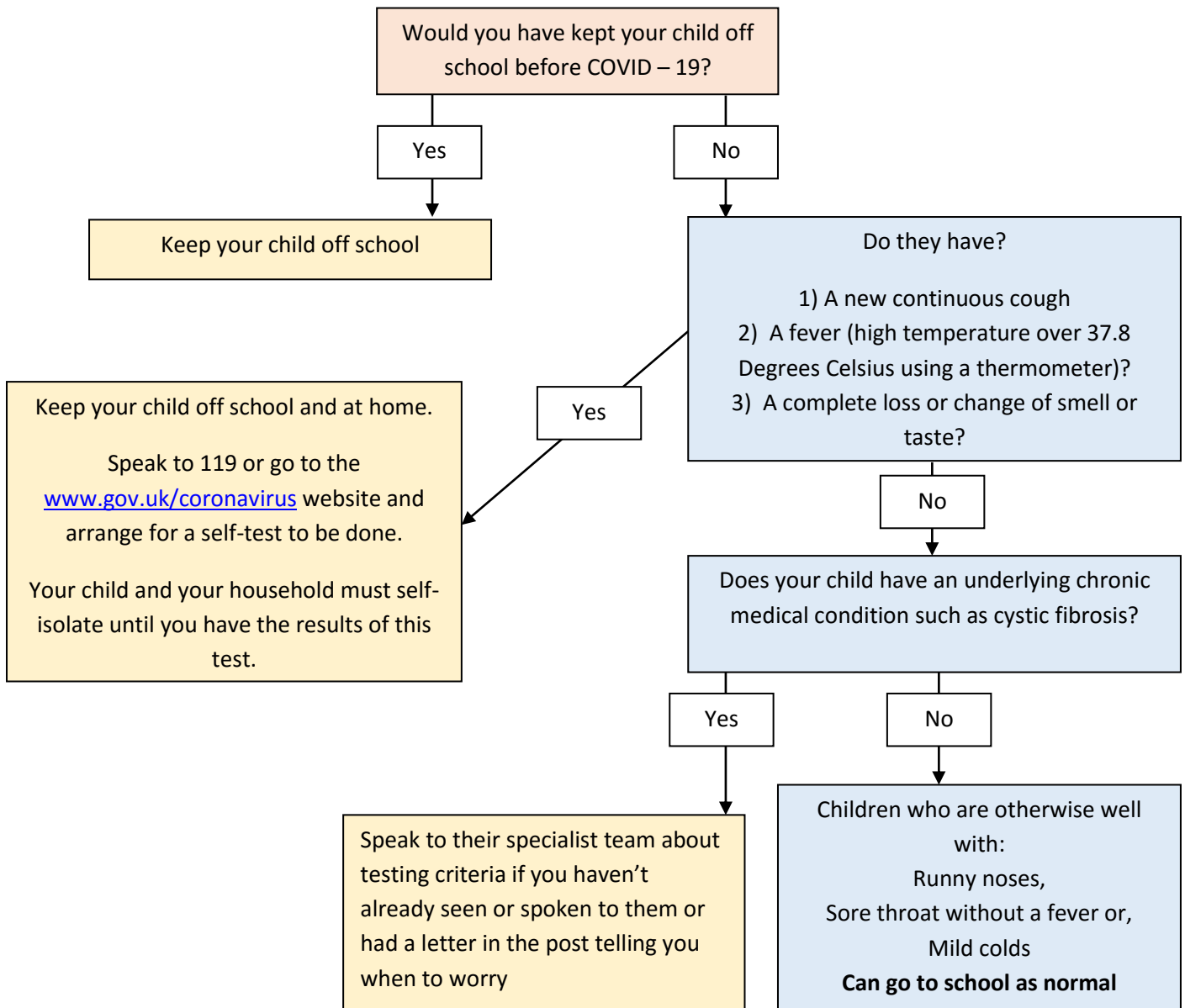
KHALSA PRIMARY SCHOOL

'Faith Inspired Education'

Wexham Road, Slough, Berkshire, SL2 5QR Tel: 01753 823501

Email: office@kpsslough.com Web: <http://www.khalsaprimarieschool.com>

My child is not feeling well. What do I do?



If in doubt, please do not hesitate to contact the School office on 01753 823501.

We, as a school, are doing everything we can to protect our parents, children and staff. If there is anything more we can do please do not hesitate to discuss this with me, I am in the playground or car park on a regular basis. Do not hesitate to stop and talk to me or contact our School Office on 01753 823501.

Warm regards,

Mr Raminder Singh Vig
Principal

